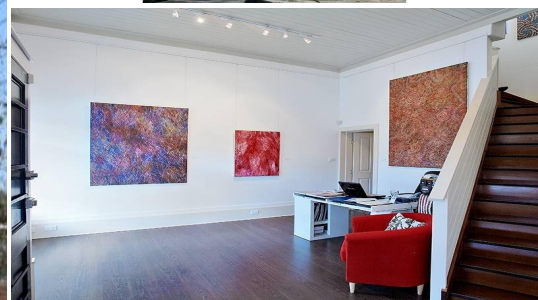


Middle Park

41 Canterbury Road



## BEAUTIFUL SMALL THERAPEUTIC PREMISES, GALLERY OR HOME/OFFICE

Delightfully renovated and situated on a very prominent corner with plenty of window display, this property offers ground and 1st floor spaces plus a fully renovated kitchenette and bathroom.

Opposite the light rail for easy access to the city and walking distance to the beach and shops.

NOTE - ALL USES MAY REQUIRE COUNCIL PERMISSION.

### Details

#### Price

annual

#### Date Available

Now

#### Contact

James Keep	0418 569 594
Matthew Crowhurst	0408 103 139